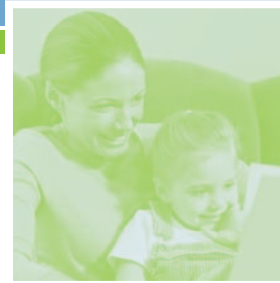


Q: Are there any program requirements?

A: Yes. Pals Program participants must be residents of Brown County and have a special need for a volunteer. They might be low income, divorced, widowed, a single parent, or have few or no relatives in the area. The child must also have a special need for this type of friendship. If the child has infrequent contacts with an absent natural parent, has difficulties in school or at home, or has low self esteem, he or she may benefit from our program.



The Pals Program

Brown County Human Services Department
111 North Jefferson Street
P.O. Box 22188
Green Bay, WI 54305-2188
(920) 448-6023

THE pals PROGRAM

Questions
& Answers
FOR PARENTS





The Pals Program

Answers to some of the most-commonly asked questions about the Brown County Pals Program.

Q: What is the Pals Program?

A: The Pals Program is a volunteer program sponsored by the Brown County Human Services Department. We match eligible children with an adult volunteer or couple to provide a positive adult role model. Referrals are accepted for eligible children age 3 to 7. Once a child is matched in the program, they can keep their Pals volunteer for as long as they choose. If a child is not matched by their 8th birthday, we will refer them to Big Brothers/Big Sisters.

Q: How are volunteers selected?

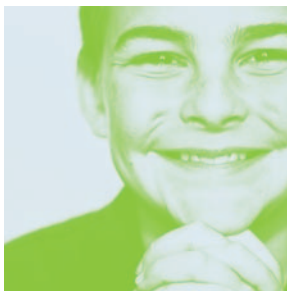
A: Each volunteer applicant is asked to complete an interview questionnaire. They will state their personal history, previous living addresses, employment, education, civil and criminal violations, and medical history. In addition, applicants are asked for three references. All applicants also undergo a police background check.

After the application is reviewed, prospective volunteers are interviewed in their own home by the Pals Program social worker. At this time, the social worker assesses what type of personality, patience, and tolerance levels the volunteer possesses.

The social worker then matches children with volunteers based on compatibility, geographic location, and length of time on the waiting list. Pals Program volunteers are asked for a minimum one-year commitment once they are matched with your child. This ensures the relationship gives the child a sense of stability, security, and trust.

Q: As a parent, will I be able to approve the selected volunteer?

A: Yes. Prior to the first meeting between your child and their Pal, the social worker will call you and describe the volunteer as accurately as possible. If you want to meet the volunteer before the match is made, the social worker will set up a pre-match meeting. All matches are set up conditionally for the first 30 days, subject to both parental and volunteer approval.



Q: What will my child and their Pal do together?

A: A Pal spends two or more hours weekly in recreational and learning activities with your child. Volunteers are discouraged from spending a lot of money on your child. The true emphasis of the program is for your child and the Pal to spend quality time together. Activities can include biking, camping, barbecues, skating, swimming, going to the library, visiting parks, washing the car, doing yard work, and participating in group activities planned by the Pals Program.

Q: How long will my child need to wait before getting a Pal?

A: Placement time varies greatly depending on several factors: Gender of the child (girls are usually matched more quickly), location, the child's needs, age of the child, and most importantly, the availability of volunteers. Contrary to popular belief, your child's name does not go to the bottom of a list and wait for it to reach the top before they are selected.

Q: How do I get a Pal for my child?

A: Children may be referred to the program by economic support workers, schools, counselors, therapists, social workers, or parents. Call the Brown County Human Services Department at 448-6023 for more information and an application packet.

